



**Industrial Sanitation (Wet & Dry)**  
**Commercial, Janitorial & Residential Services**  
**Building Maintenance/Strata Mgt.**  
**Staffing & Manpower Services**  
**Pre- & Post Event Cleaning**  
**Demolition, Post-Construction & Handyman Services**  
**Training & Certification**



Main Office: 936 12th Street, New  
Westminster, BC V3M 4K6  
Phone: 604-553-2673 | Fax: 604-553-2674  
Email: [info@surecare.ca](mailto:info@surecare.ca)  
Website: [surecaremanagementgroup.com](http://surecaremanagementgroup.com)



**Industry Trusted.**  
**Excellence Delivered.**

**Industrial Sanitation (Wet & Dry)**  
**Commercial, Janitorial & Residential Services**  
**Building Maintenance/Strata Mgt.**  
**Staffing & Manpower Services**  
**Pre- & Post Event Cleaning**  
**Demolition, Post-Construction**  
**& Handyman Services**  
**Training & Certification**



We are a proud member of



# Our Home in British Columbia

Expanding From West Coast to East Coast



Headquartered in Vancouver, British Columbia since 2013, Surecare Management Group provides highly specialized full services in industrial sanitation, commercial janitorial, staffing services of all types of business.

Surecare Management Group is growing fast in every aspect in order to meet the demand of the fast-growing sanitation and cleaning industry. We are supported by a strong management team comprised of people with relevant technical experience and a commitment to excellent quality standards and safety.

Our experienced technical staff and trained workers aspire to deliver high quality cleaning services together with internal audits and reports that provide accountability, traceability, and deviation logging. Our reports provide Senior Management with the data needed to make informed decisions. Our modern equipment together with the right choice and quality of chemicals enables us to provide the best results.



We are skilled at operating a sanitization program inside many certified environments such as SQF, BRC, AIB and HACCP. We actively take part in the mandate for constant improvement resulting in longer shelf life, improved microbe reports, cleaner drains, improved wastewater management and the reduction of water usage. It all starts with a training package that has a strong foundation in Commercial Food Sanitation (CFS) "7 Steps" and continues to build with "Stakeholder Viewpoints". We understand the relationship between a fully functioning QA/ Sanitation program and how it affects risks, profits, business development and brand.

Our system integrates into existing management certifications such as ISO, Six Sigma even Codex Alimentarius as well as governmental regulations such as CFIA, USDA, FDA, and WHO requirements and auditing. We monitor changes and developing systems to lessen the exposure to risk within the new penalty fee structure for our clients.



# RESIDENTIAL CLEANING SERVICES

Clean Beyond Standards. Trusted Results.

# 10% OFF

Discount on first Cleaning Service

Our team of professional cleaners are here to help make your home shine and sparkle.

## OUR SERVICES

- ~ Deep Cleaning and Vacuuming
- ~ Mopping and Waxing
- ~ Floor Strip and Wax
- ~ Kitchen Cleaning
- ~ Garden Cleaning
- ~ High Dusting
- ~ Carpet Cleaning
- ~ Washroom Cleaning
- ~ Window Cleaning

- ONE TIME
- WEEKLY
- BI-WEEKLY
- MONTHLY



SCAN TO KNOW MORE

LOCATION: 936 12th St., New Westminster, BC V3M4K6

CALL NOW! 604-727-0401 / 604-553-2673

# Comprehensive Cleaning Management Approach

SAMPLE Janitorial Master Cleaning Schedule		SURECARE			
TASK LIST OF SPECIFICATION	Frequency	Monday	Tuesday	Wednesday	Thursday
<b>LOBBY / RECEPTION</b>					
1. Sweep exterior and interior areas floors		X			
2. Empty waste receptacles and remove trash to designated area		X			
3. Wash and low dusting of horizontal surfaces including desks, walls, cabinets, credenzils and signs		X	X		
4. Spot clean all horizontal and vertical surfaces removing fingerprints, smudges and signs		X			
5. Thorough wiping of all clear areas of office desks and horizontal surfaces		X	X		
6. Vacuum entire floor area from wall to wall		X			
7. Vacuum traffic lane areas		X	X		
8. Vacuum stairs, wipe entry center, remove cob webs and dust		X	X		
9. Wash and clean walls and vents		X		X	
10. Wash work off dust, lint, etc.		X			
11. Clean extra mail containers		X			
12. Wiping of sides of desks, files, trash cans, doors and cabinets		X		X	
13. Cleaning and sanitizing of telephones including cradle and receivers		X	X		
14. Wipe clean top and bases of chairs and tables in office areas etc.		X	X		
15. Demolish extra hard surface floor removing dirt, coffee spills, etc.		X			
<b>OFFICE WASHROOM</b>					
1. Empty all waste receptacles and replace liners		X			
2. Remove all collected trash to designated area		X			
3. Sanitize all restroom fixtures, wipe counters, clean mirrors and sinks		X			
4. Vacuum, dust mop and mop the floor with germicidal cleaner		X			
5. Wash all restrooms partitions on both sides		X			
6. Disinfect door handles		X			
7. Wipe clean all restroom appliances, fixtures etc.		X	X		
8. Demolish extra hard surface floor removing dirt, coffee spills, etc.		X			
<b>ADMINISTRATIVE OFFICE (2)</b>					
1. Empty waste receptacles and remove trash to designated area		X			
2. Wash and low dusting of horizontal surfaces including desks, walls, cabinets, credenzils and signs		X	X		
3. Spot clean all horizontal and vertical surfaces removing fingerprints, smudges and signs		X			
4. Thorough wiping of all clear areas of office desks and horizontal surfaces		X	X		
5. Vacuum entire floor area from wall to wall		X			
6. Vacuum traffic lane areas		X	X		
7. Vacuum stairs, wipe entry center, remove cob webs and dust		X	X		
8. Wash and clean walls and vents		X		X	
9. Wash work off dust, lint, etc.		X			
10. Clean extra mail containers		X			
11. Wiping of sides of desks, files, trash cans, doors and cabinets		X		X	
12. Cleaning and sanitizing of telephones including cradle and receivers		X	X		
13. Wipe clean top and bases of chairs and tables in office areas etc.		X	X		
14. Demolish extra hard surface floor removing dirt, coffee spills, etc.		X			
<b>TESTING ROOM AND DOCUMENT ROOM</b>					
1. Empty waste receptacles and remove trash to designated area		X			
2. Wash and low dusting of horizontal surfaces including desks, walls, cabinets, credenzils and signs		X	X		
3. Spot clean all horizontal and vertical surfaces removing fingerprints, smudges and signs		X			
4. Thorough wiping of all clear areas of office desks and horizontal surfaces		X	X		
5. Vacuum entire floor area from wall to wall		X			
6. Vacuum traffic lane areas		X	X		
7. Vacuum stairs, wipe entry center, remove cob webs and dust		X	X		
8. Wash and clean walls and vents		X		X	
9. Wash work off dust, lint, etc.		X			
<b>JANITOR ROOM</b>					
1. Empty a debris cloth, wipe entry center, remove cob webs and dust		X			
2. Spot clean all horizontal and vertical surfaces removing fingerprints, smudges and signs		X	X		
3. Vacuum entire floor area from wall to wall		X			
4. Clean sink removing dirt, etc.		X			
<b>KITCHEN / LUNCHROOM</b>					
1. Empty and replace all waste receptacles		X			
2. Remove all collected trash to designated area		X			
3. Spot clean and sanitize all tables and chairs		X			
4. Spot clean and sanitize all sinks and range top		X			
5. Wipe clean interior and exterior of microwave oven		X			
6. Refill/replace interior cleaning		X	X		
7. Refill/replace exterior cleaning		X			
8. Wash mop all hard floor surfaces		X			
9. Vacuum and mop entire floor		X			

Our comprehensive Master Cleaning Schedule (MCS) program is designed to ensure consistent sanitation, regulatory compliance, and operational efficiency in food processing facilities. We develop customized cleaning schedules covering production areas, equipment, high-touch surfaces, warehouses, employee facilities, and critical control points.

Each schedule is structured to support GMP, HACCP, CFIA, FDA, and customer audit requirements while reducing contamination risks and maintaining food safety standards.

It provides a systematic approach to maintaining clean, safe, and professional facilities. From offices, warehouses, common areas, washrooms, and high-traffic spaces, we establish detailed cleaning frequencies, procedures, accountability measures, and quality inspections to ensure consistent results.

This proactive approach helps extend asset life, enhance workplace health and safety, and create a positive impression for employees, customers, and visitors.

TASK LIST OF SPECIFICATION	Frequency	Monday	Tuesday	Wednesday	Thursday
10. Demolish debris of all horizontal surfaces		X			
11. Wash and clean walls and vents		X			
12. Clean microscopes interior and exterior		X			
<b>CHANGING ROOMS / WASHROOM</b>					
1. Empty all waste receptacles and replace liners		X			
2. Remove all collected trash to designated area		X			
3. Sanitize all restroom fixtures, wipe counters, clean mirrors and sinks		X			
4. Vacuum, dust mop and mop the floor with germicidal cleaner		X			
5. Wash all restrooms partitions on both sides		X			
6. Disinfect door handles		X			
7. Wash and clean walls and vents		X		X	
8. Wash clean top and bases of chairs and tables in office areas etc.		X	X		
9. Demolish extra hard surface floor removing dirt, coffee spills, etc.		X			
10. Clean shower room located in the men's changing room		X			
<b>PRODUCTION AREA</b>					
1. Empty all waste receptacles and remove trash to designated area		X			
2. Wash all hard trash areas		X			
<b>PRODUCTION ENTRANCE / WAREHOUSE HALLWAY</b>					
1. Clean chair/box racks		X			
2. Wipe clean top and bases of chairs and tables		X			
3. Wash all horizontal and vertical surfaces		X			
4. Wash all high trash areas		X			
<b>WAREHOUSE SHIPPING, RECEIVING AND STORAGE AREAS</b>					
1. Wash all horizontal and vertical wall surfaces		X			
2. Wash all high trash areas		X			
3. Wash entire floor area		X			
4. Remove dirt, debris, etc. off all low base		X			
5. Spot clean mop hard surface floor removing dirt, spills, etc.		X			
6. Spot clean open space small rooms with 2 doors		X			
7. Wash walls removing dirt, etc.		X			
<b>MECHANICAL AREA</b>					
1. Spot clean removing dirt, etc.		X			
2. Demolish extra hard surface floor removing dirt, spills, etc.		X			
<b>WAREHOUSE WASH AREA</b>					
1. Empty and replace all waste receptacles		X			
2. Remove all collected trash to designated area		X			
3. Sanitize all restroom fixtures, wipe counters, clean mirrors and sinks		X			
4. Vacuum, dust mop and mop the floor with germicidal cleaner		X			
<b>OPEN SPACE</b>					
1. Clean		X			
2. Wash on		X			
3. Vacuum		X			
4. Wipe		X			
5. Storage to 2nd floor		X			
<b>NOTE FOR BIN AND RECYCLE AREA</b>					
1. Build proper recycle to outside bins		X			
2. DISPOSER empty and clean daily		X			

Legend:  
 X Senior Crew Responsibility  
 Yellow Senior Crew Responsibility  
 Green Senior Crew Responsibility  
 Blue Senior Crew Responsibility  
 Purple Senior Crew Responsibility  
 Red Senior Crew Responsibility  
 Created By: Surecare Cleaning Services Ltd.

# OUR SERVICES

## We Empower Your Business With The Services We Offer

Decades Of Experience And Next-Level Services

Running a business is a big job. Get Surecare Management Group on your team. We like to say that we're small enough to care but big enough to make a difference, and our satisfied clients agree with us.



INDUSTRIAL SANITATION (WET & DRY)



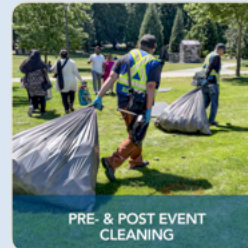
COMMERCIAL & RESIDENTIAL SERVICES



DEMOLITION, POST-CONSTRUCTION & HANDYMAN



STAFFING & MANPOWER TRAINING & CERTIFICATION



PRE- & POST EVENT CLEANING

## Partnering With Industry Leaders To Maintain Excellence



### Food Manufacturing Services

Our expertise spans food manufacturers, fresh produce distributors, bakeries, chocolate factories, and meat, seafood and poultry warehouses, ensuring every facility operates at its best.



### Commercial and Residential Buildings

For commercial buildings, we offer comprehensive janitorial services designed to keep offices, retail spaces, and public areas clean, organized, and inviting. From daily maintenance and trash removal to advanced floor care and window cleaning, we customize our services to fit your unique needs.



### Staffing & Manpower for Pharmaceutical Industry

We understand the critical need for maintaining sterile and controlled environments in the pharmaceutical industry. Our services include specialized cleaning for laboratories, manufacturing facilities, and other high-precision areas.



### Specialized Industry

We specialize in providing tailored cleaning solutions for cannabis distributors, ensuring your facility meets the highest standards of hygiene and compliance.

# INDUSTRIAL SANITATION

## Industrial Sanitation (Wet & Dry) Services

- DAILY
- PERIODICAL
- SPECIAL
- SEGMENT

### Our Core Business With Winning Track Record

Decades Of Experience And Next-Level Services

Industrial Sanitation is our core business, and we have an excellent success record. Surecare Management Group are skilled in operating a sanitation program inside many certified environments; be it FSSC2200, GFSI, IFS, CFIA, AIB, FDA, USDA, SQF, BRC, AIB, and HACCP.

Not only do we pass audits, but we also actively take part in the mandate for constant improvement resulting in longer shelf life, microbe reports, cleaner drains, wastewater management and the reduction of water usage. It all starts with a training package that has a strong foundation in Commercial Food Sanitation (CFS) steps of wet & dry cleaning and continues to build with "Stakeholder Viewpoint".

We understand the relationship between a fully integrated QA/ Sanitation Program and how it improves risk, profits, business development and brand perception.



### Surecare Management Group has multiple points of entry into existing sanitation programs:

- As a full-service third-party sanitation provider
- As a managed crew to integrate into a current sanitation program
- As an emergency crew to bring a damaged sanitation program back online
- As a post-event emergency crew
- As a staffing agency to provide skilled manpower into a current in-house sanitation program

The following pages are a sample of how the Surecare Software breaks the scope of work into specific areas that our audit system can track, document, forecast and correct non-compliant findings.

### Sample Of A Master Cleaning Schedule In Food Processing Plants And Commercial Janitorial

Run Date: 04/17/16 15:24

Page 1 of 11

Global within the CAP Worksheet Start Critical Active

1 Lettuce

Group	Corp Cat	Name of Equipment/Area
Equip	V	1 10000 - Line 1 Q: Daily Scope C: Internal Record
Equip	V	1 10010 - 1.1 Bin Tilter - LC Q: Daily Scope C: Internal Record
Equip	V	1 10020 - 1.2 Bin Tilter - LC Q: Daily Scope C: Internal Record
Equip	V	1 10030 - 1.3 Bin Tilter - LC Q: Daily Scope C: Internal Record
Equip	V	1 10040 - 1.4 Bin Tilter - LC Q: Daily Scope C: Internal Record
Equip	V	1 10050 - 1.5 Bin Tilter - LC Q: Daily Scope C: Internal Record
Equip	V	1 10060 - 1.6 Bin Tilter - LC Q: Daily Scope C: Internal Record
Equip	V	1 10070 - 1.7 Bin Tilter - LC Q: Daily Scope C: Internal Record
Equip	V	1 10080 - 1.8 Bin Tilter - LC Q: Daily Scope C: Internal Record
Equip	V	1 10090 - 1.9 Bin Tilter - LC Q: Daily Scope C: Internal Record
Equip	V	1 10100 - 1.10 Bin Tilter - LC Q: Daily Scope C: Internal Record
Equip	V	1 10105 - 1.11 Bin Tilter - LC Q: Daily Scope C: Internal Record
Equip	V	1 10110 - 1.12 Bin Tilter - LC Q: Daily Scope C: Internal Record
Equip	V	1 10120 - 1.13 Bin Tilter - LC Q: Daily Scope C: Internal Record
Equip	V	1 10130 - 1.14 Bin Tilter - LC Q: Daily Scope C: Internal Record
Equip	V	1 10140 - 1.15 Bin Tilter - LC Q: Daily Scope C: Internal Record
Equip	V	1 10150 - 1.16 Bin Tilter - LC Q: Daily Scope C: Internal Record
Equip	V	1 10160 - 1.17 Bin Tilter - LC Q: Daily Scope C: Internal Record
Equip	V	1 10170 - 1.18 Bin Tilter - LC Q: Daily Scope C: Internal Record
Equip	V	1 10180 - 1.19 Bin Tilter - LC Q: Daily Scope C: Internal Record
Equip	V	1 10190 - 1.20 Bin Tilter - LC Q: Daily Scope C: Internal Record
Equip	V	1 10200 - 1.21 Bin Tilter - LC Q: Daily Scope C: Internal Record
Equip	V	1 10210 - 1.22 Bin Tilter - LC Q: Daily Scope C: Internal Record
Equip	V	1 10220 - 1.23 Bin Tilter - LC Q: Daily Scope C: Internal Record
Equip	V	1 10230 - 1.24 Bin Tilter - LC Q: Daily Scope C: Internal Record
Equip	V	1 10240 - 1.25 Bin Tilter - LC Q: Daily Scope C: Internal Record
Equip	V	1 10250 - 1.26 Bin Tilter - LC Q: Daily Scope C: Internal Record
Equip	V	1 10260 - 1.27 Bin Tilter - LC Q: Daily Scope C: Internal Record
Equip	V	1 10270 - 1.28 Bin Tilter - LC Q: Daily Scope C: Internal Record
Equip	V	1 10280 - 1.29 Bin Tilter - LC Q: Daily Scope C: Internal Record
Equip	V	1 10290 - 1.30 Bin Tilter - LC Q: Daily Scope C: Internal Record
Equip	V	1 10300 - 1.31 Bin Tilter - LC Q: Daily Scope C: Internal Record
Equip	V	1 10310 - 1.32 Bin Tilter - LC Q: Daily Scope C: Internal Record
Equip	V	1 10320 - 1.33 Bin Tilter - LC Q: Daily Scope C: Internal Record
Equip	V	1 10330 - 1.34 Bin Tilter - LC Q: Daily Scope C: Internal Record
Equip	V	1 10340 - 1.35 Bin Tilter - LC Q: Daily Scope C: Internal Record
Equip	V	1 10350 - 1.36 Bin Tilter - LC Q: Daily Scope C: Internal Record
Equip	V	1 10360 - 1.37 Bin Tilter - LC Q: Daily Scope C: Internal Record
Equip	V	1 10370 - 1.38 Bin Tilter - LC Q: Daily Scope C: Internal Record
Equip	V	1 10380 - 1.39 Bin Tilter - LC Q: Daily Scope C: Internal Record
Equip	V	1 10390 - 1.40 Bin Tilter - LC Q: Daily Scope C: Internal Record
Equip	V	1 10400 - 1.41 Bin Tilter - LC Q: Daily Scope C: Internal Record
Equip	V	1 10410 - 1.42 Bin Tilter - LC Q: Daily Scope C: Internal Record
Equip	V	1 10420 - 1.43 Bin Tilter - LC Q: Daily Scope C: Internal Record
Equip	V	1 10430 - 1.44 Bin Tilter - LC Q: Daily Scope C: Internal Record
Equip	V	1 10440 - 1.45 Bin Tilter - LC Q: Daily Scope C: Internal Record
Equip	V	1 10450 - 1.46 Bin Tilter - LC Q: Daily Scope C: Internal Record
Equip	V	1 10460 - 1.47 Bin Tilter - LC Q: Daily Scope C: Internal Record
Equip	V	1 10470 - 1.48 Bin Tilter - LC Q: Daily Scope C: Internal Record
Equip	V	1 10480 - 1.49 Bin Tilter - LC Q: Daily Scope C: Internal Record
Equip	V	1 10490 - 1.50 Bin Tilter - LC Q: Daily Scope C: Internal Record
Equip	V	1 10500 - 1.51 Bin Tilter - LC Q: Daily Scope C: Internal Record
Equip	V	1 10510 - 1.52 Bin Tilter - LC Q: Daily Scope C: Internal Record
Equip	V	1 10520 - 1.53 Bin Tilter - LC Q: Daily Scope C: Internal Record
Equip	V	1 10530 - 1.54 Bin Tilter - LC Q: Daily Scope C: Internal Record
Equip	V	1 10540 - 1.55 Bin Tilter - LC Q: Daily Scope C: Internal Record
Equip	V	1 10550 - 1.56 Bin Tilter - LC Q: Daily Scope C: Internal Record
Equip	V	1 10560 - 1.57 Bin Tilter - LC Q: Daily Scope C: Internal Record
Equip	V	1 10570 - 1.58 Bin Tilter - LC Q: Daily Scope C: Internal Record
Equip	V	1 10580 - 1.59 Bin Tilter - LC Q: Daily Scope C: Internal Record
Equip	V	1 10590 - 1.60 Bin Tilter - LC Q: Daily Scope C: Internal Record
Equip	V	1 10600 - 1.61 Bin Tilter - LC Q: Daily Scope C: Internal Record
Equip	V	1 10610 - 1.62 Bin Tilter - LC Q: Daily Scope C: Internal Record
Equip	V	1 10620 - 1.63 Bin Tilter - LC Q: Daily Scope C: Internal Record
Equip	V	1 10630 - 1.64 Bin Tilter - LC Q: Daily Scope C: Internal Record
Equip	V	1 10640 - 1.65 Bin Tilter - LC Q: Daily Scope C: Internal Record
Equip	V	1 10650 - 1.66 Bin Tilter - LC Q: Daily Scope C: Internal Record
Equip	V	1 10660 - 1.67 Bin Tilter - LC Q: Daily Scope C: Internal Record
Equip	V	1 10670 - 1.68 Bin Tilter - LC Q: Daily Scope C: Internal Record
Equip	V	1 10680 - 1.69 Bin Tilter - LC Q: Daily Scope C: Internal Record
Equip	V	1 10690 - 1.70 Bin Tilter - LC Q: Daily Scope C: Internal Record
Equip	V	1 10700 - 1.71 Bin Tilter - LC Q: Daily Scope C: Internal Record
Equip	V	1 10710 - 1.72 Bin Tilter - LC Q: Daily Scope C: Internal Record
Equip	V	1 10720 - 1.73 Bin Tilter - LC Q: Daily Scope C: Internal Record
Equip	V	1 10730 - 1.74 Bin Tilter - LC Q: Daily Scope C: Internal Record
Equip	V	1 10740 - 1.75 Bin Tilter - LC Q: Daily Scope C: Internal Record
Equip	V	1 10750 - 1.76 Bin Tilter - LC Q: Daily Scope C: Internal Record
Equip	V	1 10760 - 1.77 Bin Tilter - LC Q: Daily Scope C: Internal Record
Equip	V	1 10770 - 1.78 Bin Tilter - LC Q: Daily Scope C: Internal Record
Equip	V	1 10780 - 1.79 Bin Tilter - LC Q: Daily Scope C: Internal Record
Equip	V	1 10790 - 1.80 Bin Tilter - LC Q: Daily Scope C: Internal Record
Equip	V	1 10800 - 1.81 Bin Tilter - LC Q: Daily Scope C: Internal Record
Equip	V	1 10810 - 1.82 Bin Tilter - LC Q: Daily Scope C: Internal Record
Equip	V	1 10820 - 1.83 Bin Tilter - LC Q: Daily Scope C: Internal Record
Equip	V	1 10830 - 1.84 Bin Tilter - LC Q: Daily Scope C: Internal Record
Equip	V	1 10840 - 1.85 Bin Tilter - LC Q: Daily Scope C: Internal Record
Equip	V	1 10850 - 1.86 Bin Tilter - LC Q: Daily Scope C: Internal Record
Equip	V	1 10860 - 1.87 Bin Tilter - LC Q: Daily Scope C: Internal Record
Equip	V	1 10870 - 1.88 Bin Tilter - LC Q: Daily Scope C: Internal Record
Equip	V	1 10880 - 1.89 Bin Tilter - LC Q: Daily Scope C: Internal Record
Equip	V	1 10890 - 1.90 Bin Tilter - LC Q: Daily Scope C: Internal Record
Equip	V	1 10900 - 1.91 Bin Tilter - LC Q: Daily Scope C: Internal Record
Equip	V	1 10910 - 1.92 Bin Tilter - LC Q: Daily Scope C: Internal Record
Equip	V	1 10920 - 1.93 Bin Tilter - LC Q: Daily Scope C: Internal Record
Equip	V	1 10930 - 1.94 Bin Tilter - LC Q: Daily Scope C: Internal Record
Equip	V	1 10940 - 1.95 Bin Tilter - LC Q: Daily Scope C: Internal Record
Equip	V	1 10950 - 1.96 Bin Tilter - LC Q: Daily Scope C: Internal Record
Equip	V	1 10960 - 1.97 Bin Tilter - LC Q: Daily Scope C: Internal Record
Equip	V	1 10970 - 1.98 Bin Tilter - LC Q: Daily Scope C: Internal Record
Equip	V	1 10980 - 1.99 Bin Tilter - LC Q: Daily Scope C: Internal Record
Equip	V	1 10990 - 2.00 Bin Tilter - LC Q: Daily Scope C: Internal Record

Run Date: 04/17/16 15:24

Page 1 of 11

Global within the CAP Worksheet Start Critical Active

1 Lettuce

Group

Corp Cat

Name of Equipment/Area

# Surecare Management Processes

## Reports, Audits, And Accountability

The management process achieves better oversight via real-time information — get better results, better documentation, and highly organized record-keeping. Perfectly capture the business workflow, by allowing it to document, track and trend for operational efficiencies.

## Technical Solutions

Automated Cleaning Management Software to achieve better oversight via real time information, better results, better documentation, and record keeping, electronically captures the business process workflows allowing it to document, track and trend for operational efficiencies.

Surecare has a full suite of specialized audits and reports that can be requested as part of any sanitation or janitorial service package. Designed to be used in large, certified environments, food manufacturing and processing, bakeries, chocolate factories, meat, seafood and poultry warehouses and much more. The pre audit report is a useful planning/project tool. It can be requested before a client or customer inspection, CFIA, USDA, FDA, or Certification Audit.



## Management System

Surecare is a unique company. We think of ourselves as gears that can be added or subtracted as needed but what makes this unique is these gears are added to your company 'driving wheel'. We are skilled in operating inside many certified environments.



# COMMERCIAL, JANITORIAL & RESIDENTIAL SERVICES

## Janitorial Services

DAILY

PERIODICAL

SPECIAL

SEGMENT

## Experienced In Working In Certified Environments

### Professional Approach And Reliable Team

Surecare Commercial and Residential Janitorial is experienced in working in certified environments; it is this knowledge that sets us apart. We provide a professional approach to fulfilling the scope of work, integrate with your companies GMP's, document the work and provide reports that grade the performance of the crew and documents the completion of the master cleaning schedule.



BodyCam monitoring option for clients.

## Commercial Cleaning

Cleaning services tailored for day to day maintenance of buildings, corporate offices, shopping complexes, trade centres, condominiums, factories, workshops, warehouses, sport stadiums, school halls, hospitals, concert halls, and theme parks.



## Pre- And Post- Events Cleaning

Pre-event cleaning ensures your venue is immaculate and ready to make a flawless first impression. Post-event cleaning handles the aftermath, taking care of deep sanitation, waste disposal, and restoring the space to its original condition. From staging before doors open to the final teardown, our team takes care of the dirty work so you can focus entirely on hosting.



## Commercial Kitchen Cleaning

Specific services for commercial kitchens are provided with specialized equipment, protocols and skills are used to maintain the kitchen, including the back bar, venting, drains, refrigeration, grease-traps, inceptors and hoods, floors, ceilings and lights.



## Warehouse Cleaning

We specialize in warehouse cleaning of interiors, exteriors, ceilings, and total package for cleaning your facility. Cleaning services for warehouse facilities with specialized in methods for various products including refrigerated areas, packaging, storage, labelling all exterior areas.



# STAFFING AND MANPOWER SERVICES

## We Build A Team For Your Staffing Needs.

A Culture Built On Trust, Open Communication And Accountability

Surecare Management Group is a full-service staffing provider committed to delivering quality customer service and building long-term relationships with employers and job seekers. The company supplies **qualified, trained and certified workers** for industries such as warehousing, food processing, seafood plants, bakeries, breweries, and manufacturing facilities. Applicants must be legally allowed to work in Canada.

Surecare offers flexible staffing solutions including direct hire, part-time, temporary, and permanent placements tailored to client needs. Its recruitment services include job postings, candidate screening, skills assessments, interview coordination, and wage negotiation support. Surecare also provides post-placement follow-up to help ensure successful and lasting employment outcomes.

## A Team That Is Ready. At All Times.

Consistently Improving To Provide Qualified Professionals

Training is the foundation of everything we do at Surecare Management Group. We relentlessly pursue the cutting edge of training technology, which empowers us to provide stronger, more capable professionals. We recognize that individual career and personal growth is vital for our employees. At Surecare, we provide the opportunities and environment for hard working employees to progress further along their career path.



Level 2

- Cross training at client site and location

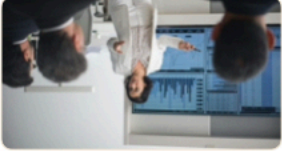


SCAN THE QR CODE to apply for a job



Level 1

- Client site GMP
- Client site orientation



The Foundation

- Introduction to Surecare policies and procedures
- Surecare's commitment to Health and Safety
- Surecare's requirements and adherence to company GMPs



Level 3

- Level 1 first-aid
- Stakeholder viewpoints
- Introduction to non-compliance and corrective actions
- Introduction to the deviation report
- Introduction to a zero-fault work environment

# COMMERCIAL, JANITORIAL & RESIDENTIAL SERVICES

## Building Maintenance / Strata Mgt.

Surecare Management Group provides reliable strata cleaning services tailored for condos and townhouses, ensuring both interior and exterior spaces remain clean, safe, and welcoming. Our services include regular cleaning of hallways, lobbies, and other common areas, along with detailed care for public access spaces that leave a lasting impression on residents and visitors alike.



## Garbage Removal And Disposal

We offer dependable garbage disposal and removal services for condos, townhouses, and other residential dwellings. We ensure waste is collected, sorted, and removed efficiently from common areas, preventing overflow and keeping properties clean, sanitary, and odour-free.



## Carpet Shampoo And Encapsulation

On carpets, Surecare is equipped with both steam extraction and/or encapsulation. We offer and recommend maintenance programs after the initial clean for commercial establishments, to preserve the value of the carpet and extend its useful lifespan.



## Exterior Maintenance Services

Edge, mow and blow yard services, external pressure washing of sidewalks, awnings, and parking lots as well as seasonal winterizing and de-icing are just a few of our exterior services. The most common is window cleaning and we can handle any job of any size. We have IFRATA trained level 1, 2, & 3, for high angle rope work.



## Grout And Tile Cleaning

Revive your tile, grout, and other hard surfaces to a like new condition. Let Surecare develop a plan for your tile and grout care that will extend the life of your assets, improve your image and the safety of your facility.



## Transportation & Logistics

Cleaning services catered for day-to-day cleaning of high-traffic environments such as airports, railway stations, bus terminals and ferries offering rapid cabin cleaning or in-depth detailed work. We also offer waterline and tank ozone treatment and testing as well as emergency response decontamination.



## Hard Surface, Strip & Wax

Our floor treatments, applications and cleaning systems are tailored for the maintenance of most types of floor finishes. We also do floor care process where old layers of wax and finish are removed, the surface is thoroughly cleaned, and new coats of wax are applied to restore shine and protection.



## TRAINING AND CERTIFICATION



### Wet and Dry Sanitation Training

This training focuses on both aqueous (wet) cleaning methods and non-aqueous (dry) cleaning processes for food manufacturing facilities, covering topics from chemical use to environmental monitoring to ensure regulatory compliance and prevent food borne illness.



### GMP / WHMIS Safety / SSOP Procedure

We provide specialized training in GMP (Good Manufacturing Practices), WHMIS (Workplace Hazardous Materials Information System), and SSOP (Sanitation Standard Operating Procedures) to ensure workplace safety, compliance, and efficiency.



### Scissor Lift / Boom Lift Training

Our Scissor Lift and Boom Lift training prepares operators to work safely and efficiently with aerial lift equipment. The program covers proper operation, hazard awareness, inspection procedures, and regulatory compliance to minimize risks on the job site.



### Fall Arrest Training

Our Fall Arrest training equips workers with the knowledge and skills to prevent injuries when working at heights. The program covers proper use of safety harnesses, fall protection systems, and regulatory requirements to ensure compliance and minimize risks.

## Surecare Industry Certifications

Professional Certifications and Compliance Standards.



### Canadian Food Safety (CFS)

Our team has undergone Canadian Food Safety (CFS) training to strengthen our expertise in sanitation, hygiene, and food safety compliance. This knowledge allows us to deliver cleaning and sanitation services that help food facilities maintain safe, compliant, and audit-ready environments.



### ISO 9001

Our team has completed ISO 9001 Quality Management training, reinforcing our commitment to quality, continuous improvement, and customer-focused service delivery across all operations.



### Hazard Analysis and Critical Control Point (HACCP)

Our team has completed HACCP training, equipping us with the knowledge and best practices needed to support safe, compliant, and high-performing food production facilities.

## DEMOLITION, POST-CONSTRUCTION & HANDYMAN SERVICES

### Expertly Building Spaces With Zero Hassle

One Call, Fix All.

#### Demolition Services

Our demolition services provide safe, efficient, and controlled removal of structures, interiors, and building components for residential, commercial, and industrial projects. Whether you require complete demolition, selective demolition, tenant improvements, or site preparation, our experienced team follows strict safety standards while minimizing disruption to surrounding properties. We handle every phase of the process with precision, ensuring your site is properly prepared for the next stage of development.



#### Post-Construction Cleaning

A construction project is not truly complete until the space is clean, safe, and ready for occupancy. Our post-construction cleaning services remove dust, debris, adhesives, paint residue, and construction materials from newly built or renovated properties. Using professional equipment and proven cleaning methods, we deliver a polished final presentation that allows owners, tenants, and visitors to experience the finished project at its best.



#### Handyman Services

Our handyman services provide reliable solutions for ongoing property maintenance, repairs, and installations. From minor repairs and fixture replacements to drywall patching, painting, furniture assembly, and general maintenance tasks, our skilled technicians help keep residential and commercial properties in excellent condition. Whether you need a one-time repair or ongoing maintenance support, we deliver prompt, professional service focused on quality workmanship and customer satisfaction.



## Comprehensive Training And Certification Standards

Exceeding Industry Standards And Compliance

Surecare Management Group offers expert training and certification services in industrial best practices, hazard analysis, ISO certification, and other industry requirements. Our programs help businesses achieve compliance, enhance safety, and drive operational excellence through practical, results-focused learning.

Surecare Management Group provides comprehensive training and certification services designed to help organizations meet and exceed industry standards. From industrial best practices and hazard analysis to ISO certification and other specialized industry requirements, our programs equip businesses with the knowledge and tools needed to ensure safety, compliance, and operational excellence.

With a focus on practical application and expert guidance, we help companies build a culture of reliability, efficiency, and continuous improvement.

## Proud Member, Certified Processes, Safety, Compliance, And Operational Excellence



MAINTENANCE

## General Handyman Works

Our experienced maintenance team helps protect your investment through proactive inspections, preventive maintenance, and timely repairs. By identifying and resolving issues before they become costly problems, we reduce downtime, improve operational efficiency, and extend the lifespan of your building systems, equipment, and facilities. Whether it's routine upkeep or urgent repairs, we provide dependable service that keeps your property safe, functional, and operating at its best.



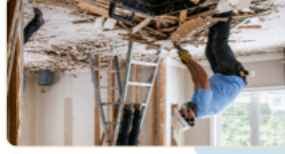
## DESIGN AND BUILD

From concept to completion, our design-build services provide a streamlined approach that combines planning, design, and construction under one trusted team. We work closely with clients to understand their vision, budget, and operational requirements, delivering customized solutions that balance aesthetics, functionality, and long-term value. By managing every stage of the project in-house, we improve communication, accelerate timelines, control costs, and ensure a seamless construction experience with exceptional results.



## Post Construction Cleaning

Our post-construction cleaning team removes dust, debris, and construction residue to prepare your facility for occupancy. We clean floors, walls, fixtures, windows, shelving, and other surfaces to deliver a safe, polished, and move-in-ready environment.



## Demolition Services

Every successful construction project begins with proper site preparation. Our demolition team creates clean, organized, and construction-ready environments that allow projects to move forward efficiently and safely. Through careful planning, coordination, and execution, we help clients stay on schedule while laying the foundation for successful redevelopment, renovation, or new construction projects.

## Design, Build and Thrive

One Call, Fix All.

We design and build homes that are as unique as you are. Creating a new home is a significant and exciting journey. Our team will guide you through every step, ensuring a smooth and successful project.